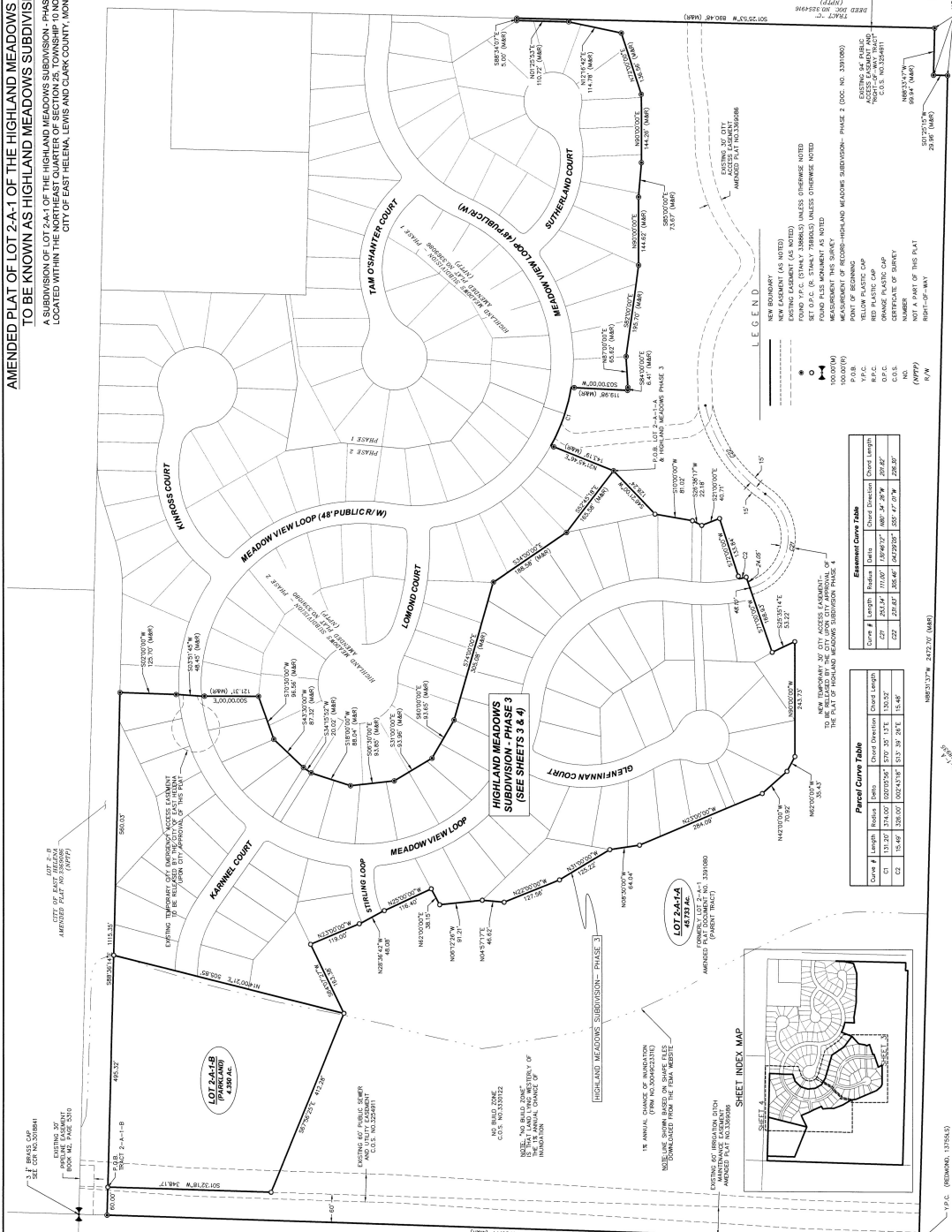


**AMENDED PLAT OF LOT 2-A-1 OF THE HIGHLAND MEADOWS SUBDIVISION - PHASE 2
TO BE KNOWN AS HIGHLAND MEADOWS SUBDIVISION - PHASE 3**

A SUBDIVISION OF LOT 2-A-1 OF THE HIGHLAND MEADOWS SUBDIVISION - PHASE 2, DOCUMENT NO. 3391080, LOCATED WITHIN THE NORTHEAST QUARTER OF SECTION 25, TOWNSHIP 10 NORTH, RANGE 3 WEST, PALM, CITY OF EAST VILLAGES, LEWIS AND CLARK COUNTY, MONTANA.



AMENDED PLAT

FIELD: R-5	7/4 SEC	T	R
DRAWN: R-5	25	10N	3W
DATE: 12/7/2022			

COUNTY: LEWIS & CLARK
PRINCIPAL: MERIDIAN,
MONTANA

SHEET
2 OF 4

STAHLY ENGINEERING & ASSOCIATES
PROFESSIONAL ENGINEERS & SURVEYORS

STAHLY ENGINEERING & ASSOCIATES
1000 N. 10TH ST. SUITE 100
BOZEMAN, MT 59717
PHONE: (406) 552-2528
FAX: (406) 552-2528

1:8" = 100.00'
0 100 200
SCALE IN FEET

LEGEND

- NEW EASIMENT (AS NOTED)
- EXISTING EASIMENT (AS NOTED)
- SET OF P.C. (P.C. STAKES) UNLESS OTHERWISE NOTED
- MEASUREMENT OF SECOND-HIGHLAND MEADOWS SUBDIVISION - PHASE 2 (DOC. NO. 3391080)
- POINT OF BEGINNING
- YELLOW PLASTIC CAP
- ORANGE PLASTIC CAP
- CERTIFICATE OF SURVEY
- NUMBER
- NO. (100)
- DATE (1/1/20)
- BY (JLB)

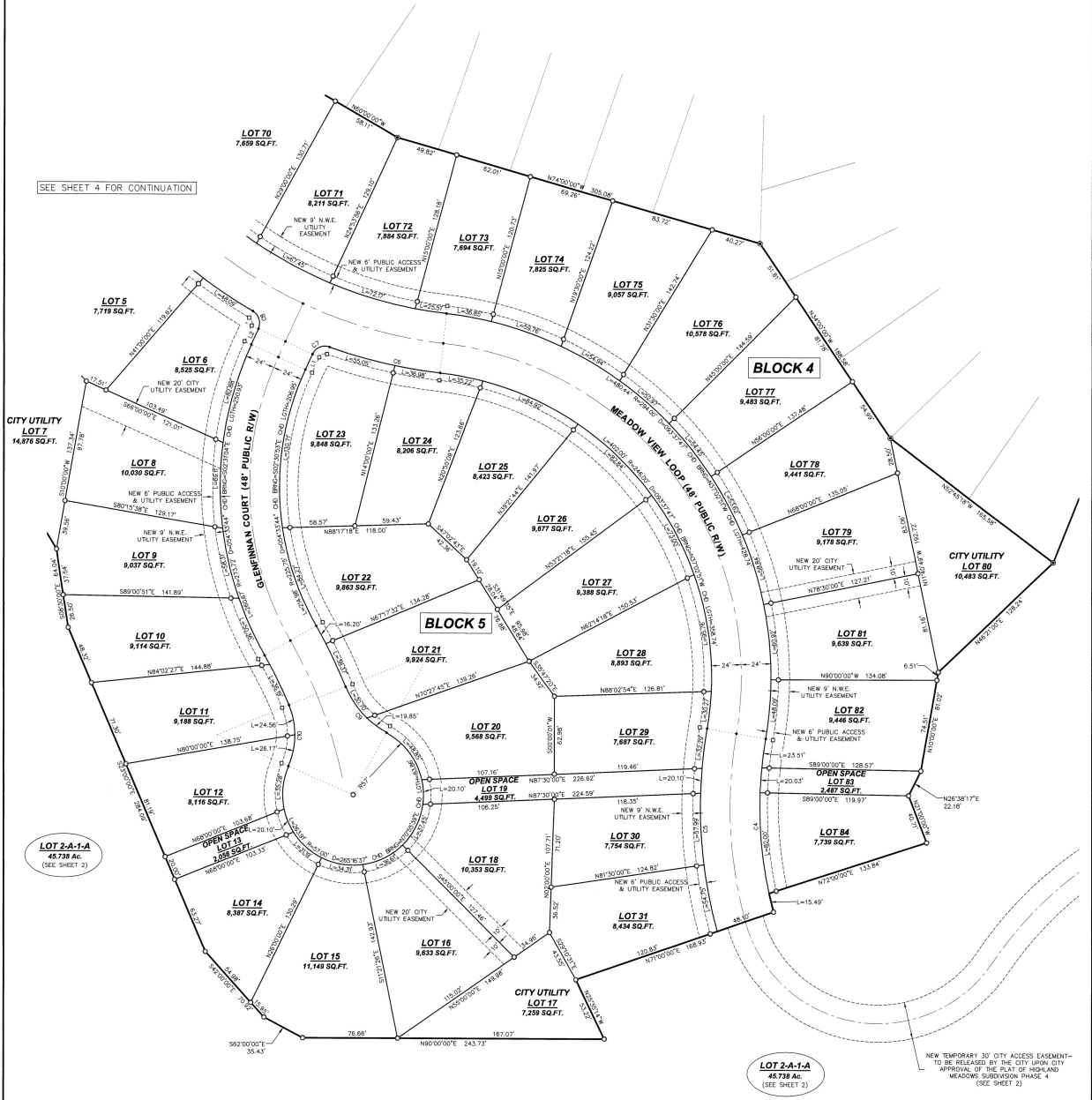
SHEET INDEX MAP

BASES OF BEGINNING - SET 1: MEASUREMENT WITH BEAM CONTROL AND PLASTIC CAP
OTHER MEASUREMENTS MADE ON 1/14/2022
ALL DISTANCES ARE IN INTERNATIONAL FOOT UNITS
MONTANA CONVEYANCE ACT 1997, CHAPTER 10, SECTION 10-101
MONTANA CONVEYANCE ACT 1997, CHAPTER 10, SECTION 10-102
MONTANA CONVEYANCE ACT 1997, CHAPTER 10, SECTION 10-103
MONTANA CONVEYANCE ACT 1997, CHAPTER 10, SECTION 10-104
MONTANA CONVEYANCE ACT 1997, CHAPTER 10, SECTION 10-105
MONTANA CONVEYANCE ACT 1997, CHAPTER 10, SECTION 10-106
MONTANA CONVEYANCE ACT 1997, CHAPTER 10, SECTION 10-107
MONTANA CONVEYANCE ACT 1997, CHAPTER 10, SECTION 10-108
MONTANA CONVEYANCE ACT 1997, CHAPTER 10, SECTION 10-109
MONTANA CONVEYANCE ACT 1997, CHAPTER 10, SECTION 10-110

L:\2021-Highland Meadows LLC-00751-Phase_3\DWG\Survey\2021-07\21-07.dwg, 3 (DWG), PLOT3.Dwg, Rev: 21, 2022 - 9:58am

AMENDED PLAT OF LOT 2-A-1 OF THE HIGHLAND MEADOWS SUBDIVISION - PHASE 2 TO BE KNOWN AS HIGHLAND MEADOWS SUBDIVISION - PHASE 3

A SUBDIVISION OF LOT 2-A-1 OF THE HIGHLAND MEADOWS SUBDIVISION - PHASE 2, DOCUMENT NO. 3391080,
LOCATED WITHIN THE NORTHEAST QUARTER OF SECTION 25, TOWNSHIP 10 NORTH, RANGE 3 WEST, P.M.M.,
CITY OF EAST HELENA, LEWIS AND CLARK COUNTY, MONTANA



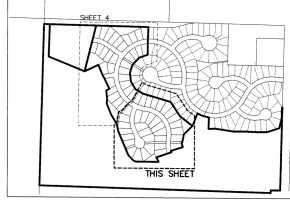
SEE SHEET 4 FOR CONTINUATION

LOT 2-A-1-A
45,738 AC.
(SEE SHEET 2)

LOT 2-A-1-A
45,738 AC.
(SEE SHEET 2)

NEW TEMPORARY 30' CITY ACCESS EASEMENT-
TO BE RELEASED BY THE CITY UPON CITY
APPROVAL OF THE PLAT OF HIGHLAND
MEADOWS SUBDIVISION PHASE 4
(SEE SHEET 2)

SHEET INDEX MAP



LEGEND

- NEW BOUNDARY
- - - - - NEW EASEMENT (AS NOTED)
- EXISTING EASEMENT (AS NOTED)
- FOUND Y.P.C. (STANLY 33886LS) UNLESS OTHERWISE NOTED
- SET 5/8"x24" REBAR WITH O.P.C. (R. STANLY 75890-L3)
- SET 1/2"x18" REBAR WITH R.P.C. (R. STANLY 75890-L5)
- CALCULATED GEOMETRY POINT (RADIAL WITH CENTERLINE GEOMETRY-NOTHING SET)
- 100.00'(M) MEASUREMENT OF THIS SURVEY
- 100.00'(F) MEASUREMENT OF RECORD-HIGHLAND MEADOWS SUBDIVISION-PHASE 2 (DOC. NO. 3391080)
- P.O.B. POINT OF BEGINNING
- P.O.C. ORANGE PLASTIC CAP
- P.P.C. YELLOW PLASTIC CAP
- R.P.C. RED PLASTIC CAP
- C.O.S. CERTIFICATE OF SURVEY
- NO. NUMBER
- (PPPP) NOT A PART OF THIS PLAT
- AC. ACRES
- SQ.FT. SQUARE FEET
- N.W.E. NORTHWESTERN ENERGY

- SURVEY NOTES:**
1. FROM LOT LINE MONUMENTS ARE WITNESS CORNERS SET ON THE BOUNDARY OF THE NEW 6' PUBLIC ACCESS AND UTILITY EASEMENT AND DO NOT REPRESENT THE TRUE LOT CORNER.
 2. CURVE GEOMETRY MONUMENTS ARE REFERENCE MONUMENTS SET ON THE NEW 6' PUBLIC ACCESS AND UTILITY EASEMENT BOUNDARY AND ARE RADIAL TO THE CURVE GEOMETRY THEY REFERENCE.

Parcel Curve Table

Curve #	Length	Radius	Delta	Chord Direction	Chord Length
C4	141.02	326.00	02°47'07"	N2° 33' 32"W	139.93
C5	165.13	374.00	02°51'49"	N2° 52' 53"W	163.79
C6	92.02	389.00	01°33'15"	N77° 05' 07"W	91.81
C7	16.31	11.00	084°57'29"	S67° 12' 46"W	14.86
C8	16.32	11.00	085°00'10"	N17° 46' 02"W	14.86
C9	50.55	73.00	039°40'20"	S41° 52' 30"E	49.55
C10	50.74	63.00	046°08'30"	N02° 29' 42"E	49.38
C11	16.32	11.00	084°58'49"	N47° 07' 54"W	14.86
C12	75.26	176.00	024°30'27"	S77° 17' 28"W	74.71
C14	98.87	224.00	025°17'20"	S76° 53' 57"W	98.07
C15	16.32	11.00	084°58'51"	N47° 03' 19"W	14.86
C16	172.69	389.00	025°26'59"	N17° 16' 57"E	171.28
C17	16.32	11.00	084°58'49"	N12° 29' 23"W	14.86
C18	132.63	226.00	033°37'29"	N71° 47' 31"W	130.74
C19	180.89	274.00	033°37'29"	N71° 47' 31"W	158.50
C20	16.32	11.00	084°59'14"	N82° 32' 01"E	14.86

Parcel Line Table

Line #	Direction	Length
L1	S24°44'02"W	13.81
L2	S24°44'02"W	13.78
L3	S89°32'42"W	13.91
L4	S89°32'42"W	13.91
L5	N89°36'16"W	16.53
L6	N89°36'16"W	7.12

BASIS OF BEARING:
CONTROL POINT #1 (GPS BASE) - SET 3" REBAR WITH SEA&A CONTROL RED PLASTIC CAP
GPS POSITION OBSERVED ON 11-16-2016
MONTANA STATE PLANE (NAD83), MONTANA 2000
PROJECTED TO GROUND UNITS
NORTH LATITUDE: 46°35'59.9441"
WEST LONGITUDE: 111°00'01.2907"
MERIDIAN CONVERGENCE ANGLE = (-)01°46'05"
ALL DISTANCES ARE IN INTERNATIONAL FOOT UNITS.

STAHLY ENGINEERING & ASSOCIATES
PROFESSIONAL ENGINEERS & SURVEYORS

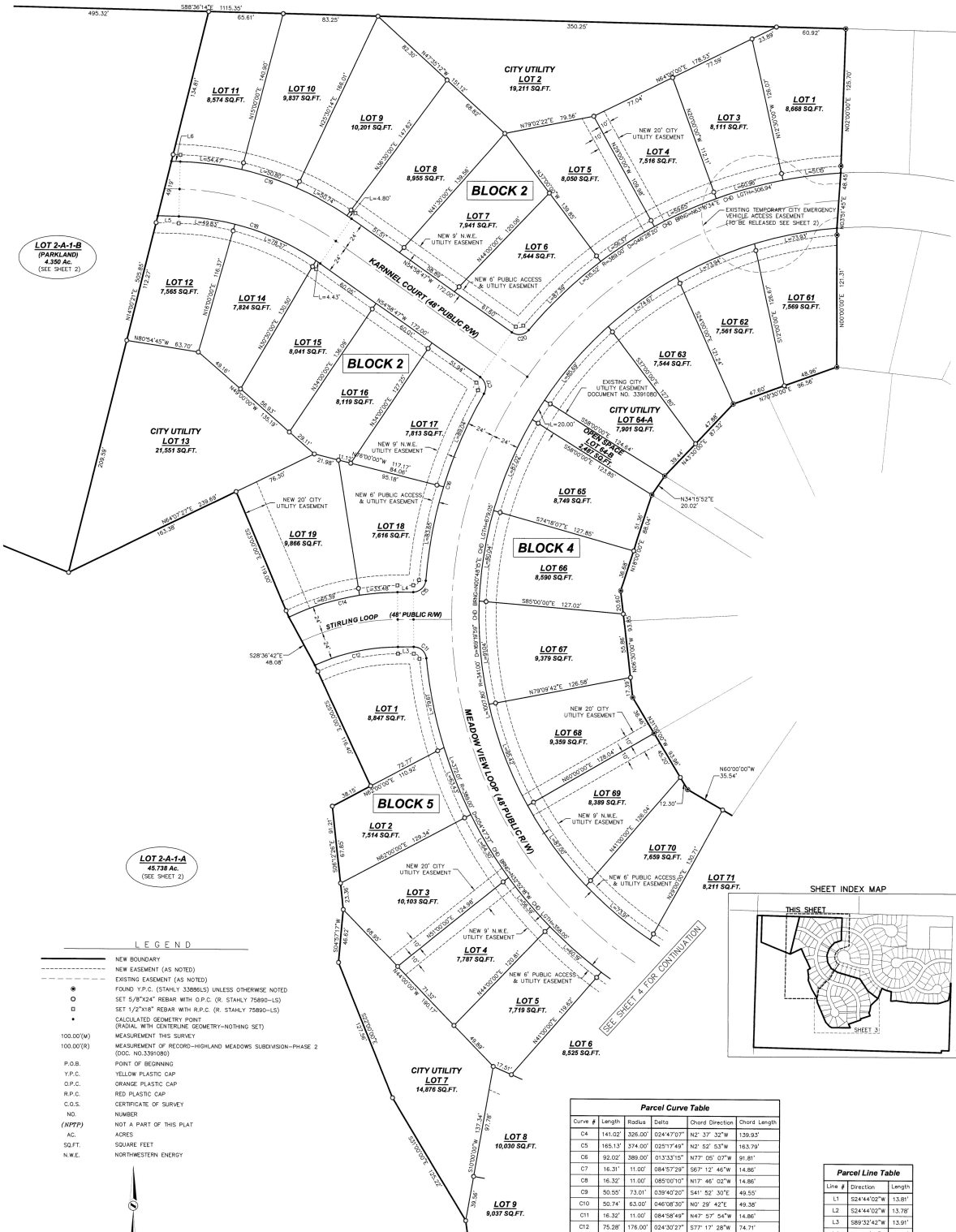
2223 MONTANA AVE. 3530 CENTENNIAL DR. 451 BRIDGER DR. STE. 1
SUITE 201 HELENA, MT 59601 BOZEMAN, MT 59715
HELENA, MT 59601 Phone: (406)442-8864 Phone: (406)552-8594
Phone: (406)901-4055 Fax: (406)442-8857 Fax: (406)552-9528

AMENDED PLAT									
COUNTY:	LEWIS & CLARK	1/4	SEC	T	R	1/4	SEC	T	R
PRINCIPAL MERIDIAN, MONTANA		25	10N	3W					
FIELD: RJS DRAWING: RJS CHECKED: NOF DATE: 12/21/2022									
									SHEET 3 OF 4

3391-Highland Meadows LLC-00791_Plan_3(DWG)Survey\2021-00791_Plan_4 (DWG) (2) Plotted Dec 21, 2022 - 9:56am

AMENDED PLAT OF LOT 2-A-1 OF THE HIGHLAND MEADOWS SUBDIVISION - PHASE 2 TO BE KNOWN AS HIGHLAND MEADOWS SUBDIVISION - PHASE 3

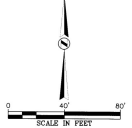
A SUBDIVISION OF LOT 2-A-1 OF THE HIGHLAND MEADOWS SUBDIVISION - PHASE 2, DOCUMENT NO. 3391080,
LOCATED WITHIN THE NORTHEAST QUARTER OF SECTION 25, TOWNSHIP 10 NORTH, RANGE 3 WEST, P.M.M.,
CITY OF EAST HELENA, LEWIS AND CLARK COUNTY, MONTANA



LOT 2-A-1-B
(PARKLAND)
4.350 Ac.
(SEE SHEET 2)

LOT 2-A-1-A
45.738 Ac.
(SEE SHEET 2)

- LEGEND**
- NEW BOUNDARY
 - - - - - NEW EASEMENT (AS NOTED)
 - - - - - EXISTING EASEMENT (AS NOTED)
 - FOUND Y.P.C. (STAHLY 33886LS) UNLESS OTHERWISE NOTED
 - SET 5/8"x24" REBAR WITH O.P.C. (R. STAHLY 75890-LS)
 - ◻ SET 1/2"x18" REBAR WITH R.P.C. (R. STAHLY 75890-LS)
 - CALCULATED GEOMETRY POINT (RADIAL WITH CENTERLINE GEOMETRY—NOTHING SET)
 - 100.00'(W) MEASUREMENT OF RECORD—HIGHLAND MEADOWS SUBDIVISION—PHASE 2 (DOC. NO.3391080)
 - P.O.B. POINT OF BEGINNING
 - Y.P.C. YELLOW PLASTIC CAP
 - O.P.C. ORANGE PLASTIC CAP
 - R.P.C. RED PLASTIC CAP
 - C.O.S. CERTIFICATE OF SURVEY
 - NO. NUMBER
 - (N/PP) NOT A PART OF THIS PLAT
 - AC. ACRES
 - SQ.FT. SQUARE FEET
 - N.W.E. NORTHWESTERN ENERGY

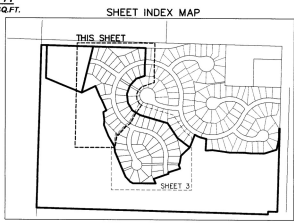


SURVEY NOTES:

- PROBLY USE MONUMENTS ARE WITNESS CORNERS SET ON THE BOUNDARY OF THE NEW 6' PUBLIC ACCESS AND UTILITY EASEMENT AND DO NOT REPRESENT THE TRULY LOT CORNER
- CURVE GEOMETRY MONUMENTS ARE REFERENCE MONUMENTS SET ON THE NEW 6' PUBLIC ACCESS AND UTILITY EASEMENT BOUNDARY AND ARE RADIAL TO THE CURVE GEOMETRY THEY REFERENCE.

Curve #	Length	Radius	Delta	Chord Direction	Chord Length
C4	141.02'	326.00'	024°47'07"	N2° 37' 32"W	129.93'
C5	165.13'	374.00'	025°17'49"	N2° 52' 53"W	163.79'
C6	92.02'	389.00'	013°33'15"	N77° 05' 07"W	91.81'
C7	16.32'	11.00'	084°57'28"	S67° 12' 46"W	14.86'
C8	16.32'	11.00'	085°00'10"	N17° 45' 02"W	14.86'
C9	50.55'	73.01'	039°40'20"	S41° 52' 30"E	49.55'
C10	50.74'	63.00'	040°08'20"	N47° 28' 42"E	49.38'
C11	16.32'	11.00'	084°58'48"	N47° 37' 54"W	14.86'
C12	75.28'	178.00'	024°30'23"	S77° 17' 28"W	74.71'
C13	98.87'	224.00'	020°17'25"	S76° 53' 59"W	98.07'
C14	16.32'	11.00'	084°58'51"	N47° 02' 19"E	14.86'
C15	16.32'	11.00'	084°58'49"	N12° 29' 23"W	14.86'
C16	132.63'	328.00'	033°37'28"	N71° 47' 31"W	130.74'
C19	160.80'	274.00'	033°37'28"	N71° 47' 31"W	158.50'
C20	16.32'	11.00'	084°59'14"	N82° 32' 01"E	14.86'

Line #	Direction	Length
L1	S24°44'02"W	13.81'
L2	S24°44'02"W	13.78'
L3	S89°32'42"W	13.91'
L4	S89°32'42"W	13.91'
L5	N88°36'16"W	18.53'
L6	N88°36'16"W	7.79'



BASIS OF BEARING
CONTROL POINT #1 (GPS BASE) - SET 7' REBAR WITH SEAAL CONTROL RED PLASTIC CAP
GPS POSITION OBSERVED ON 11-14-2023
MONTANA STATE PLANE, NAD83, MONTANA 2500
PROJECTED TO SPACING UNITS AS:
NORTH LATITUDE: 46°35'59.95015"
WEST LONGITUDE: 111°50'05.73893"
MERIDIAN CONVERGENCE ANGLE = (-)01°48'05"
ALL DISTANCES ARE IN INTERNATIONAL FOOT UNITS.

STAHLY ENGINEERING & ASSOCIATES
PROFESSIONAL ENGINEERS & SURVEYORS
www.seoeng.com

2223 MONTANA AVE. STE. 201 BILLINGS, MT 59101 Phone: (406)651-4055

3530 CENTENNIAL DR. BILLINGS, MT 59101 Phone: (406)832-8984 Fax: (406)442-8557

851 BROOKER DR. STE. 1 BOZEMAN, MT 59715 Phone: (406)552-2594 Fax: (406)552-9538

AMENDED PLAT

COUNTY: LEWIS & CLARK
MONTANA

1/4	SEC	T	R	1/4	SEC	T	R
	25	10N	3W				

PRINCIPAL MERIDIAN, MONTANA

FIELD: RJS
DRAWN: RJS
CHECKED: NCF
DATE: 12/21/2022

SHEET
4 OF 4